

tivoli®

TRACE

VERTICAL



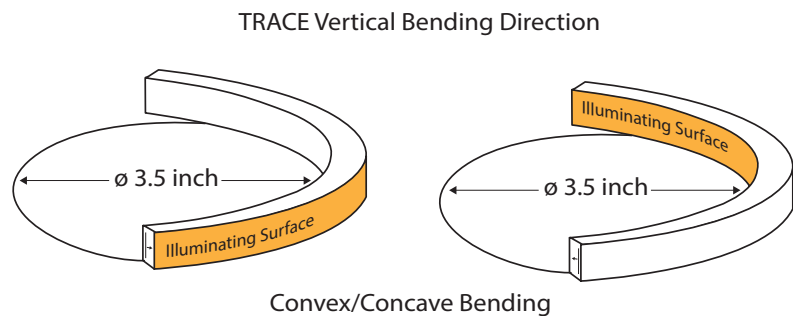
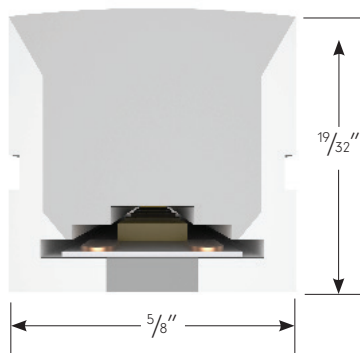
Project: _____ Type: _____

Product Features

- Constructed using flexible SMD LEDs with zero voltage drop for reliability and uniformity of light
- Used to outline structures or applications where traditional glass neon is used
- Low Voltage 24V DC
- Long-life LEDs with tight cutting increments for precise field installation
- UV Stabilized for exterior use with silicone housing (no yellowing or cracking)
- IP67 Rating
- IK07 Rating - protected against 2 joules impact
- 1 Bin, 1.5 step color consistency



Dimensions



Order Specification Guide

NOTE: Lengths and quantity of each run must be submitted at time of order.
 TRACE is factory prep only. In-field cutting will void warranty.

| PRODUCT CODE | INTENSITY | PROFILE | LED COLOR | VOLTAGE |
|------------------------------------|---|---------------------|---|--------------------|
| TRCE | | V | | 24 |
| TRCE = Trace Flexible Light | L = Low Output S = Standard Output H = High Output | V = Vertical | 24 = 2400K 27 = 2700K 30 = 3000K 35 = 3500K* 40 = 4000K 50 = 5000K* GR = Green* BL = Blue RD = Red AM = Amber* | 24 = 24V DC |

*Special Order Option. Consult factory for lead time and MOQ.

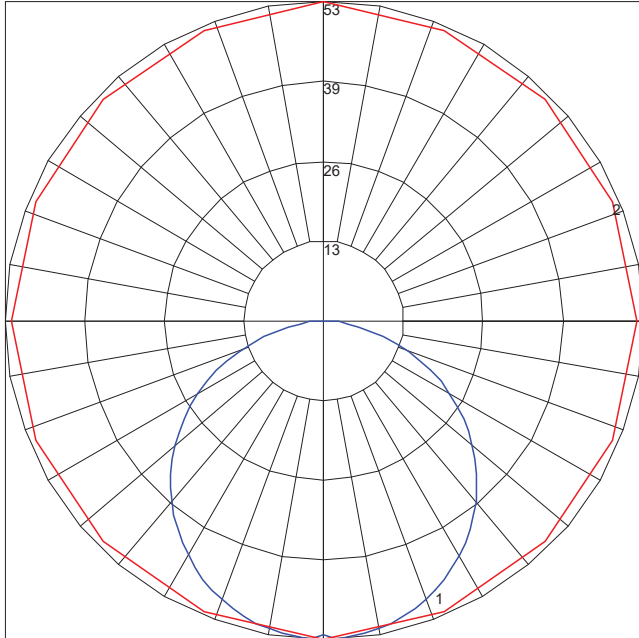
Specifications

| Output (2700K) | | | |
|---------------------------|--|-----------------|-------------|
| LED Intensity | Low Output | Standard Output | High Output |
| Lumens (lm/ft) | 87 | 174 | 261 |
| Beam Angle | 115.8° | | |
| Efficacy (lm/W) | 58 | | |
| LEDs | 2835 | | |
| CRI | >80 | | |
| Electrical | | | |
| Dimming | TRIAC, ELV, MLV, 0-10V, DMX | | |
| Input Voltage | 24V DC | | |
| Power Consumption (W/ft) | 1.5 | 3 | 4.5 |
| Maximum Run | 58' | 29' | 19' |
| Physical | | | |
| Dimensions | 5/8" X 19/32" | | |
| Cutting Increments | 1.97" | | |
| Material | UV, Solvent, Saltwater resistant silicone | | |
| Wire Exit Options | Front, Side, Bottom | | |
| LED PIN Temperature | 60.9°C / 141.6°F | | |
| Storage Temperature | -25°C / -13°F - 60°C / 140°F | | |
| Ambient Temperature | Ta _{min} = -25°C / -13°F, Ta _{max} | | |
| Certification and Testing | | | |
| Certification | UL | | |
| Environment | Wet Location | | |
| IP Rating | IP67 | | |
| IK Rating | IK07 | | |
| Warranty | 3 Years | | |

- Maximum Run length refers to single side feed in serial connection
- The given color temperature is the strip (after coating) color temperature
- The given data are typical values due to the tolerances of the production process and electrical components; values for the light output and electrical power can vary up to 10%

Photometrics

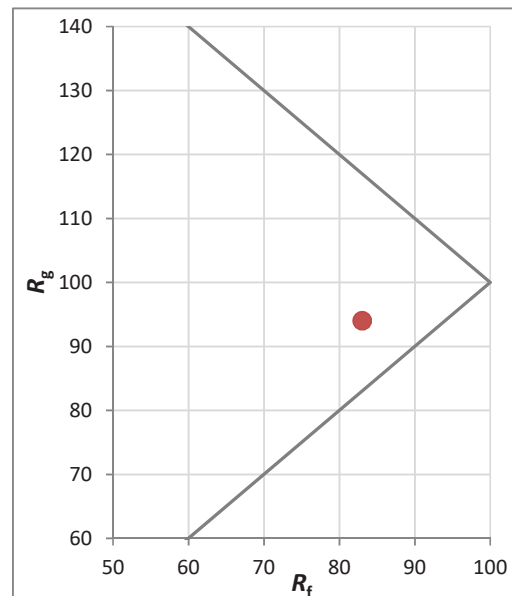
TRACE Vertical: Based on 2700K



Maximum Candela = 52.6
 Located At Horizontal Angle = 90
 Vertical Angle = 2.5
 #1 Vertical Plane Through Horizontal Angles (90-270) (Through Max. Cd.)
 #2 Vertical Cone Through Vertical Angle (2.5) (Through Max. Cd.)

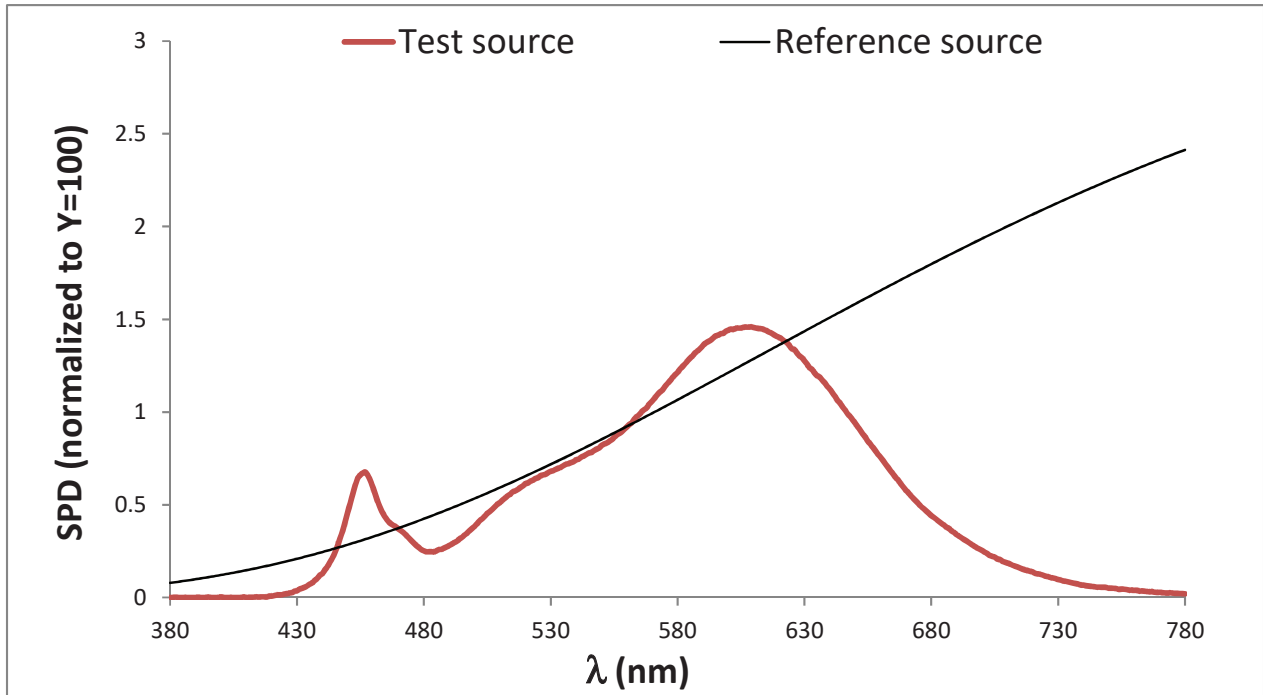
TM-30

| Hue Bin | R_f | Graphic Shifts (%) | |
|---------|-------|--------------------|------|
| | | Chroma | Hue |
| 1 | 77 | -11% | 1% |
| 2 | 80 | -8% | 6% |
| 3 | 80 | -4% | 9% |
| 4 | 89 | -3% | 3% |
| 5 | 92 | -2% | 3% |
| 6 | 94 | -1% | -2% |
| 7 | 85 | -7% | -3% |
| 8 | 91 | -5% | 2% |
| 9 | 84 | -6% | 7% |
| 10 | 78 | -3% | 13% |
| 11 | 80 | 2% | 13% |
| 12 | 84 | 7% | 1% |
| 13 | 85 | 3% | -9% |
| 14 | 78 | 4% | -16% |
| 15 | 83 | -5% | -7% |
| 16 | 73 | -9% | -16% |

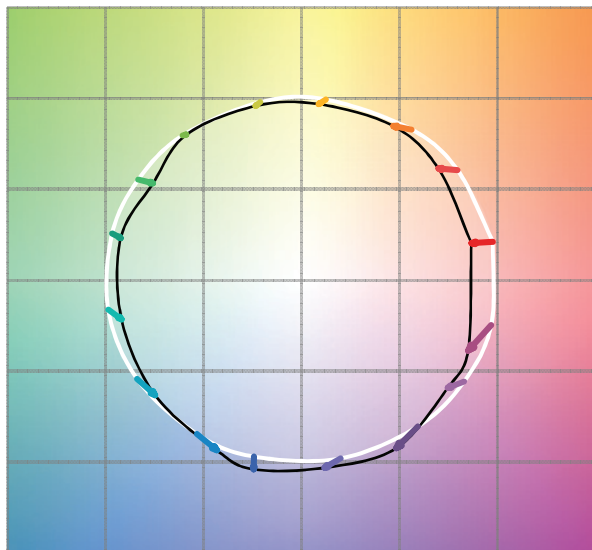


TM-30

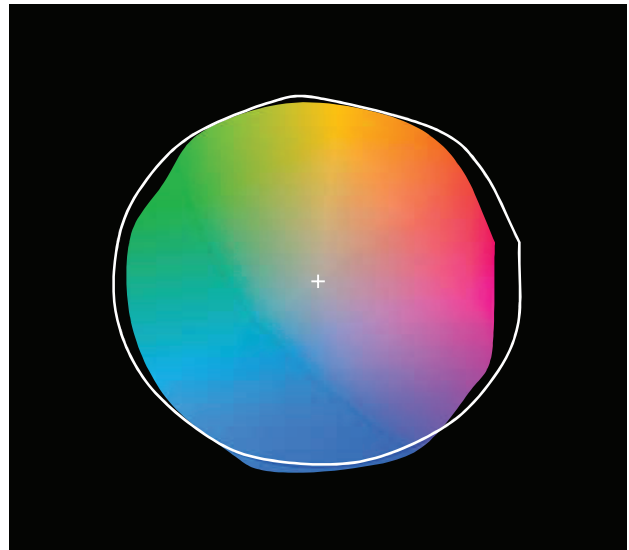
TRACE Vertical: Based on 2700K



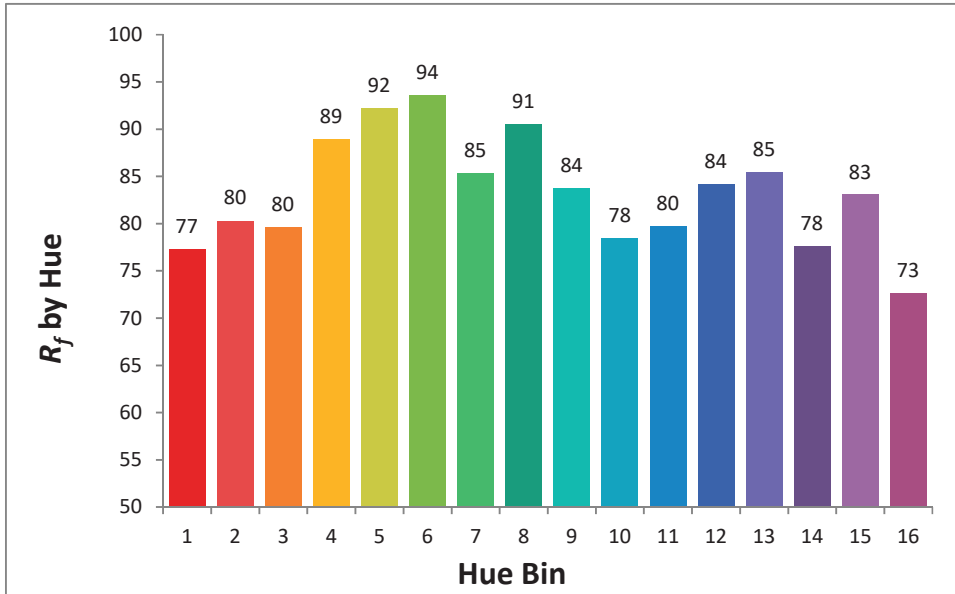
Color Vector Graphic



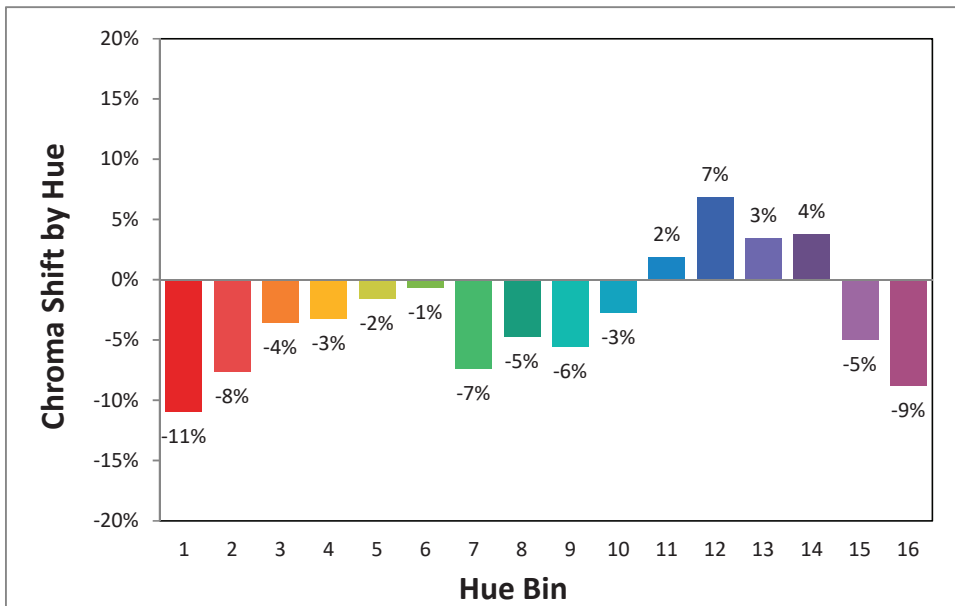
Color Distortion Graphic



Hue Angle Bin vs. Fidelity Index

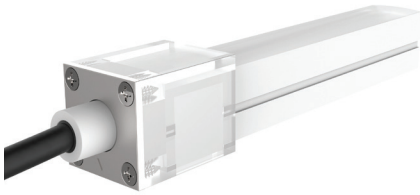


Hue Angle Bin vs. Change of Chroma

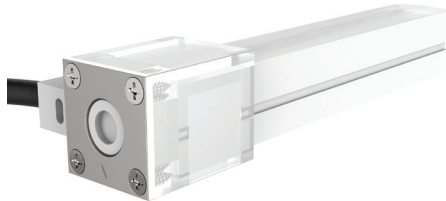
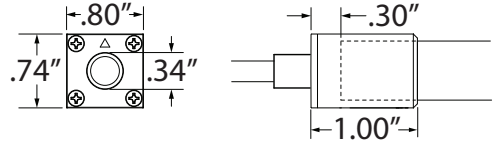


Power Lead Options - Vertical

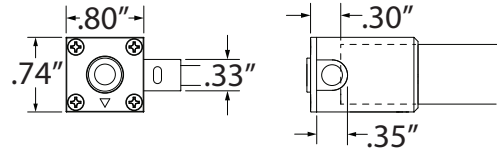
IP67: Rated for outdoor use and factory assembled.
 Note: The end cap is made of UV stabilized polycarbonate, which produces no yellowing and cracking over time.



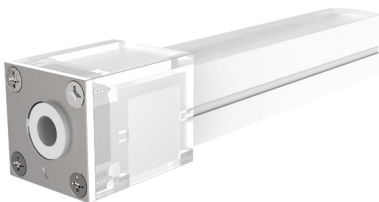
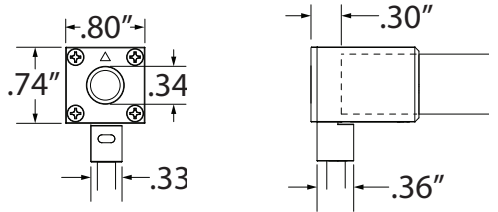
TRACE LEAD - FRONT
 Vertical Front Lead Entry
 5' Power Lead Cable with End Cap



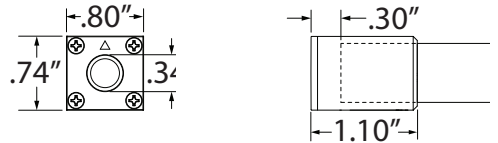
TRACE LEAD - SIDE
 Vertical Side Lead Entry
 5' Power Lead Cable with End Cap



TRACE LEAD - BOTTOM
 Vertical Bottom Lead Entry
 5' Power Lead Cable with End Cap



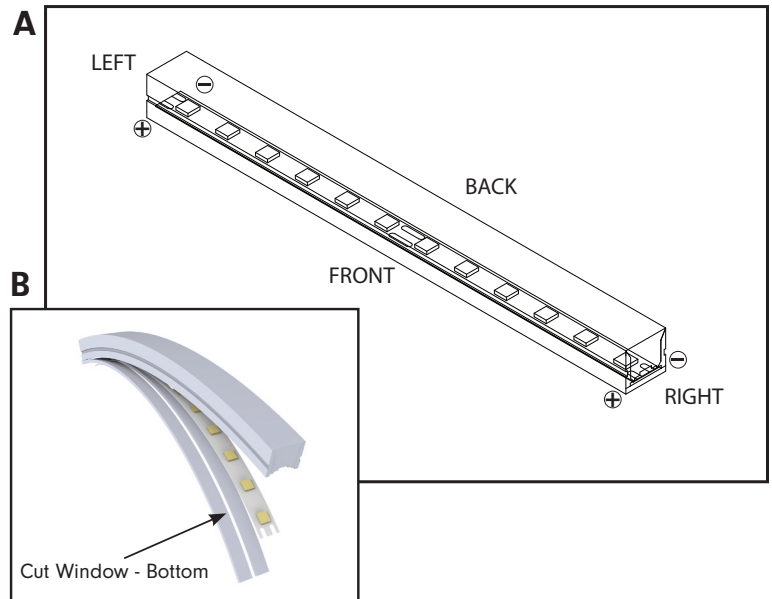
TRACE END CAP
 Vertical End Cap (No Lead)
 1 pc End Cap with 4 Screws



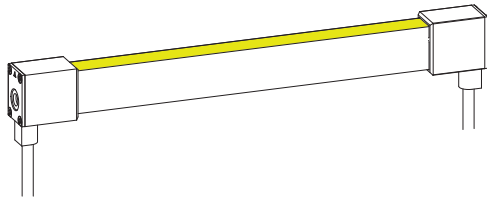
Power Leads - How to Configure

It is important to note the orientation of TRACE and what is considered Left Facing and Right Facing. TRACE is polarity specific and proper submission of power leads for each run is necessary for factory prep standards.

VERTICAL TRACE - The cut window will always indicate as Bottom (Image B) and positive (+) polarity will indicate front facing (Image A).

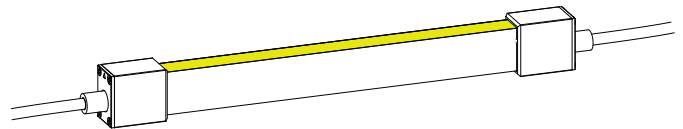


Power Lead Configurations



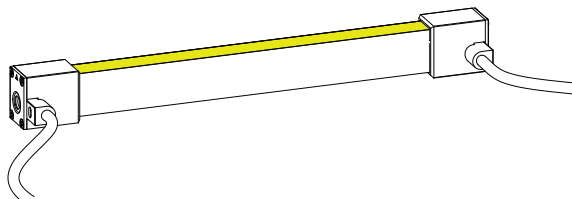
TRCE-V-LEAD-B-B

Left Facing Bottom Lead with 5' Power Cable to Right Facing Bottom Lead with 5' Power Cable



TRCE-V-LEAD-F-F

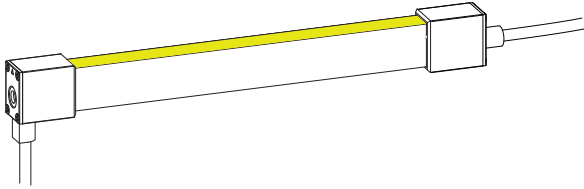
Left Facing Front Lead with 5' Power Cable to Right Facing Front Lead with 5' Power Cable



TRCE-V-LEAD-S-S

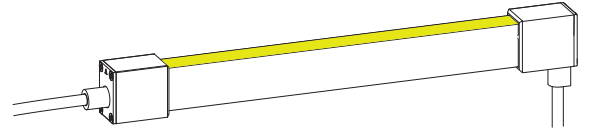
Left Facing Side Lead with 5' Power Cable to Right Facing Side Lead with 5' Power Cable

Power Lead Configurations



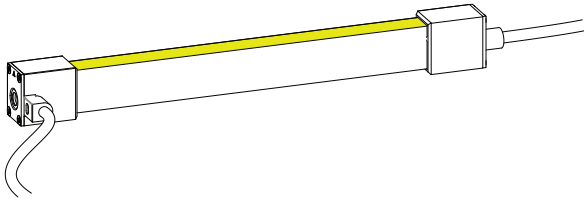
TRCE-V-LEAD-B-F

Left Facing Bottom Lead with 5' Power Cable to
Right Facing Front Lead with 5' Power Cable



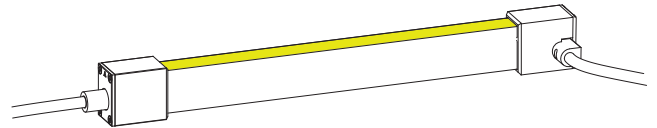
TRCE-V-LEAD-F-B

Left Facing Front Lead with 5' Power Cable to
Right Facing Bottom Lead with 5' Power Cable



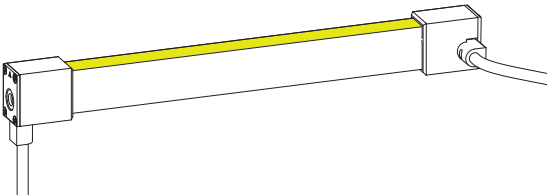
TRCE-V-LEAD-S-F

Left Facing Side Lead with 5' Power Cable to
Right Facing Front Lead with 5' Power Cable



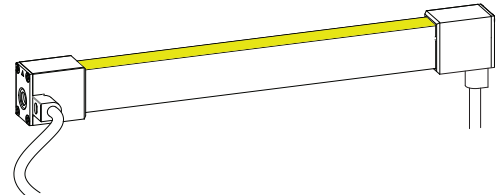
TRCE-V-LEAD-F-S

Left Facing Front Lead with 5' Power Cable to
Right Facing Side Lead with 5' Power Cable



TRCE-V-LEAD-B-S

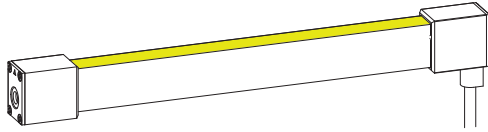
Left Facing Bottom Lead with 5' Power Cable to
Right Facing Side Lead with 5' Power Cable



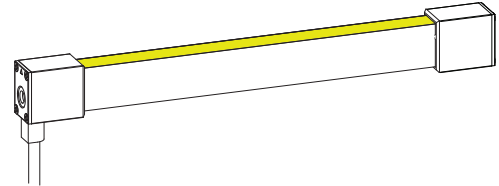
TRCE-V-LEAD-S-B

Left Facing Side Lead with 5' Power Cable to
Right Facing Bottom Lead with 5' Power Cable

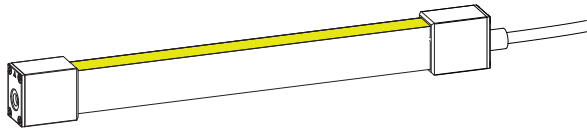
Power Lead Configurations



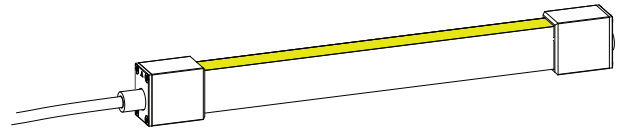
TRCE-V-LEAD-E-B
Left End Cap Lead to Right Facing Bottom Lead with 5' Power Cable



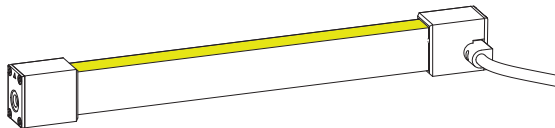
TRCE-V-LEAD-B-E
Left Facing Bottom Lead with 5' Power Cable to Right End Cap



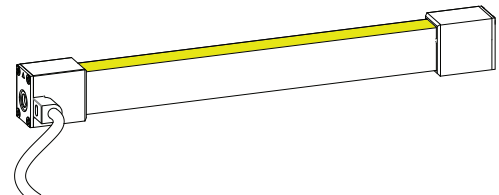
TRCE-V-LEAD-E-F
Left End Cap Lead to Right Facing Front Lead with 5' Power Cable



TRCE-V-LEAD-F-E
Left Facing Front Lead with 5' Power Cable to Right End Cap



TRCE-V-LEAD-E-S
Left Facing End Cap Lead to Right Facing Side Lead with 5' Power Cable

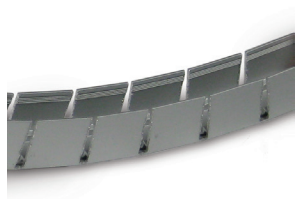
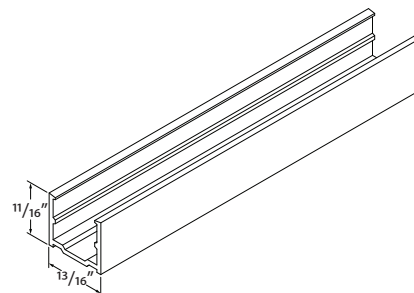


TRCE-V-LEAD-S-E
Left Facing Side Lead with 5' Power Cable to Right Facing End Cap

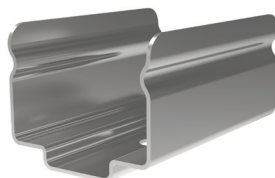
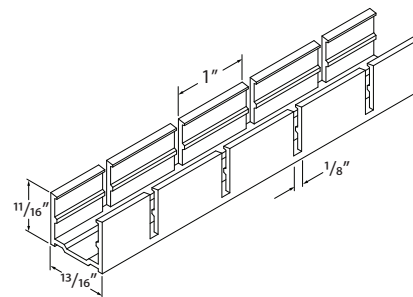
Mounting Options



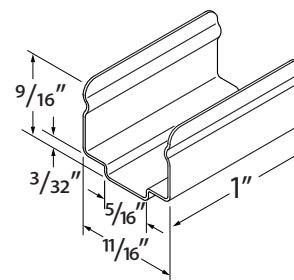
TRCE-V-SLV-SCHAN-6.5
 Straight Channel
 Vertical Profile Only
 6.56' Length, Aluminum



TRCE-V-SLV-NCHAN-6.5
 Notched Channel
 Vertical Profile Only
 Radius Bend: 11"
 6.56' Length, Aluminum



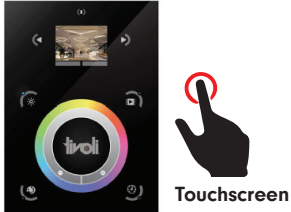
TRCE-V-SLS-MTCLIPS
 Mounting Clips
 Vertical Profile Only
 2 Stainless Steel Clips with 2 Screws



FLXD-SIL-GE-10
 GE Silicone 10oz Tube
 Use to adhere TRACE into entire run length of channel
 25' estimated bead length per 10oz tube

Controls & Software

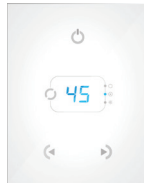
CONTROLS



Touchscreen

TVOQ-10-XX-7

XX = BK (black), WH (white)
1024 DMX channel, 500 scene,
10 zone, glass touch screen



Touchscreen

TVOQ-2-XX

XX = BK (black), WH (white)
512 DMX channel, 99 scene,
1 zone, glass touch screen



Touchscreen

TVOQ-1-WHT

512 DMX channel, 16 scene,
4 zone, glass touch screen

SOFTWARE



Cue™ and CuePro™ softwares are specifically designed for the TivoCUE™ in-wall DMX controls and includes an array of tools required by the latest DMX lighting fixtures. Intuitive, with easy-to-use effects that can be dropped into timelines, and multi-zone synchronization capabilities allow you to program a project effortlessly.



Power Supplies - Indoor

ADUL - NON DIMMING

| DESCRIPTION | CAT NO | APPLICATION | PRIMARY VOLTAGE | SECONDARY VOLTAGE | CIRCUIT BREAKERS | MAX LOAD | CIRCUIT CAPACITY |
|---------------------------------------|-------------------|------------------|------------------------|-------------------|------------------|----------|------------------|
| ADUL Series Class 2 Transformer | ADUL-120-1-4-24-D | Indoor / Damp | 100-277V AC 5ø60 HZ | 24V DC | 1 | 96W | 4A |
| | ADUL-240-2-4-24-D | | | | 2 | 2x96W | 2x4A |
| | ADUL-320-3-4-24-D | | | | 3 | 3x96W | 3x4A |

ADUL - 0-10V DIMMING

| DESCRIPTION | CAT NO | APPLICATION | PRIMARY VOLTAGE | SECONDARY VOLTAGE | CIRCUIT BREAKERS | MAX LOAD | CIRCUIT CAPACITY |
|---------------------------------------|---------------------|------------------|------------------------|-------------------|------------------|----------|------------------|
| ADUL Series Class 2 Transformer | ADUL-120-1-4-24-DOT | Indoor / Damp | 100-277V AC 5ø60 HZ | 24V DC | 1 | 96W | 4A |
| | ADUL-240-2-4-24-DOT | | | | 2 | 2x96W | 2x4A |
| | ADUL-320-3-4-24-DOT | | | | 3 | 3x96W | 3x4A |

ADUL - DMX SINGLE ADDRESS

| DESCRIPTION | CAT NO | APPLICATION | PRIMARY VOLTAGE | SECONDARY VOLTAGE | CIRCUIT BREAKERS | MAX LOAD | CIRCUIT CAPACITY |
|---------------------------------------|---------------------|------------------|------------------------|-------------------|------------------|----------|------------------|
| ADUL Series Class 2 Transformer | ADUL-120-1-4-24-DIN | Indoor / Damp | 100-277V AC 5ø60 Hz | 24V DC | 1 | 96W | 4A |
| | ADUL-240-2-4-24-DIN | | | | 2 | 2x96W | 2x4A |
| | ADUL-320-3-4-24-DIN | | | | 3 | 3x96W | 3x4A |

ADUL - DMX MULTI ADDRESS

| DESCRIPTION | CAT NO | APPLICATION | PRIMARY VOLTAGE | SECONDARY VOLTAGE | CIRCUIT BREAKERS | MAX LOAD | CIRCUIT CAPACITY |
|---------------------------------------|-----------------------|------------------|------------------------|-------------------|------------------|----------|------------------|
| ADUL Series Class 2 Transformer | ADUL-240-2-4-24-DIN-2 | Indoor / Damp | 100-277V AC 5ø60 Hz | 24V DC | 2 | 2x96W | 2x4A |
| | ADUL-320-3-4-24-DIN-3 | | | | 3 | 3x96W | 3x4A |

Power Supplies - Outdoor
ADNM - NON DIMMING

| DESCRIPTION | CAT NO | APPLICATION | PRIMARY VOLTAGE | SECONDARY VOLTAGE | CIRCUIT BREAKERS | MAX LOAD | CIRCUIT CAPACITY |
|---------------------------------------|-------------------|---------------------|------------------------|-------------------|------------------|----------|------------------|
| ADNM Series Class 2 Transformer | ADNM-90-1-4-24-D | Indoor / Outdoor | 100-277V AC 5ø60 Hz | 24V DC | 1 | 90W | 3.75A |
| | ADNM-120-1-4-24-D | | | | 1 | 96W | 4A |
| | ADNM-240-2-4-24-D | | | | 2 | 2x96W | 2x4A |
| | ADNM-320-3-4-24-D | | | | 3 | 3x96W | 3x4A |

ADNM - 0-10V DIMMING

| DESCRIPTION | CAT NO | APPLICATION | PRIMARY VOLTAGE | SECONDARY VOLTAGE | CIRCUIT BREAKERS | MAX LOAD | CIRCUIT CAPACITY |
|---------------------------------------|---------------------|---------------------|------------------------|-------------------|------------------|----------|------------------|
| ADNM Series Class 2 Transformer | ADNM-90-1-4-24-DOT | Indoor / Outdoor | 100-277V AC 5ø60 Hz | 24V DC | 1 | 90W | 3.75A |
| | ADNM-120-1-4-24-DOT | | | | 1 | 96W | 4A |
| | ADNM-240-2-4-24-DOT | | | | 2 | 2x96W | 2x4A |
| | ADNM-320-3-4-24-DOT | | | | 3 | 3x96W | 3x4A |

ADNM - DMX SINGLE ADDRESS

| DESCRIPTION | CAT NO | APPLICATION | PRIMARY VOLTAGE | SECONDARY VOLTAGE | CIRCUIT BREAKERS | MAX LOAD | CIRCUIT CAPACITY |
|---------------------------------------|---------------------|---------------------|------------------------|-------------------|------------------|----------|------------------|
| ADNM Series Class 2 Transformer | ADNM-90-1-4-24-DIN | Indoor / Outdoor | 100-277V AC 5ø60 Hz | 24V DC | 1 | 90W | 3.75A |
| | ADNM-120-1-4-24-DIN | | | | 1 | 96W | 4A |
| | ADNM-240-2-4-24-DIN | | | | 2 | 2x96W | 2x4A |
| | ADNM-320-3-4-24-DIN | | | | 3 | 3x96W | 3x4A |

ADNM - DMX MULTI ADDRESS

| DESCRIPTION | CAT NO | APPLICATION | PRIMARY VOLTAGE | SECONDARY VOLTAGE | CIRCUIT BREAKERS | MAX LOAD | CIRCUIT CAPACITY |
|---------------------------------------|-----------------------|---------------------|------------------------|-------------------|------------------|----------|------------------|
| ADNM Series Class 2 Transformer | ADNM-240-2-4-24-DIN-2 | Indoor / Outdoor | 100-277V AC 5ø60 Hz | 24V DC | 2 | 2x96W | 2x4A |
| | ADNM-320-3-4-24-DIN-3 | | | | 3 | 3x96W | 3x4A |

ADNM - DMX/DALI FLICKER-FREE FOR TV STUDIO

| DESCRIPTION | CAT NO | APPLICATION | PRIMARY VOLTAGE | SECONDARY VOLTAGE | CIRCUIT BREAKERS | MAX LOAD | CIRCUIT CAPACITY |
|---------------------------------------|---------------------|---------------------|------------------------|-------------------|------------------|----------|------------------|
| ADNM Series Class 2 Transformer | ADNM-120-1-4-24-DTV | Indoor / Outdoor | 100-277V AC 5ø60 Hz | 24V DC | 1 | 1x96W | 1x4A |
| | ADNM-240-2-4-24-DTV | | | | 2 | 2x96W | 2x4A |
| | ADNM-320-3-4-24-DTV | | | | 3 | 3x96W | 3x4A |

Power Supplies - Outdoor

INFINITY - MLV / ELV / 0-10V / PWM / TRIAC

| DESCRIPTION | CAT NO | APPLICATION | PRIMARY VOLTAGE | SECONDARY VOLTAGE | CIRCUIT BREAKERS | MAX LOAD | MIN LOAD | CIRCUIT CAPACITY |
|---|-------------------|---------------------|-----------------|-------------------|------------------|----------|----------|------------------|
| Infinity Series Class 2 Transformer | INF-J-30-1-1.3-24 | Indoor / Outdoor | 100 - 277V AC | 24VDC | 1 | 30W | 3W | 1.3A |
| | INF-J-60-1-2.5-24 | | | | 1 | 60W | 6W | 2.5A |
| | INF-J-96-1-4-24 | | | | 1 | 96W | 9W | 4A |
| | INF-J-192-2-4-24 | | | | 2 | 2x96W | 2x9W | 2x4A |
| | INF-J-288-3-4-24 | | | | 3 | 3x96W | 3x9W | 3x4A |

Dimmers

DIMMING - 0-10V

| DESCRIPTION | CAT NO | APPLICATION | INPUT VOLTAGE | OUTPUT VOLTAGE | MAX LOAD |
|--------------|------------|-------------|---------------|----------------|----------------------------------|
| 0-10V Dimmer | DIM-LD-010 | Indoor | 24V DC | 24V DC | 30 mA max. output (sink only) |

DIMMING - MLV

| DESCRIPTION | CAT NO | APPLICATION | INPUT VOLTAGE | OUTPUT VOLTAGE | MAX LOAD |
|-------------|--------|-------------|---------------|----------------|----------|
| MLV Dimmer | N-600 | Indoor | 120V AC | 120V AC | 450W |
| | N-1000 | | | | 800W |
| | N-1500 | | | | 1200W |
| | D-600 | | | | 450W |
| | M-600 | | | | 450W |
| | M-1000 | | | | 800W |

DIMMING - ELV

| DESCRIPTION | CAT NO | APPLICATION | INPUT VOLTAGE | OUTPUT VOLTAGE | MAX LOAD |
|-------------|--------|-------------|---------------|----------------|----------|
| ELV Dimmer | ME-600 | Indoor | 120V AC | 120V AC | 450W |
| | DE-300 | | | | 300W |